

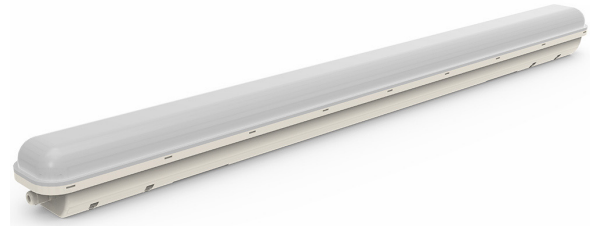
CODE: TEM24WPLFP
**40W 1200MM TEMPORARY EMERGENCY
WEATHERPROOF BATTEN**

PRODUCT RANGE

CODE	DESCRIPTION
TEM24WPLFP	40W 1200mm Temporary Emergency Weatherproof Batten

ORDERING INFORMATION

Carton Qty	6 pieces
Weight	1.8kg (unit) - 10.8kg (box)
Dimension (L x W x H)	1220mm x 90mm x 75mm



OPERATIONAL INFORMATION

TECHNICAL SPECIFICATIONS

Operating Mode	Maintained c/w flex and plug
Voltage (V); Frequency (Hz)	220-260V; 50Hz
Operating Temperature	1° - 45° C
IP Rating	IP65
Wiring	Flex and Plug
Mounting Type	Wall or Ceiling Surface Mounted
Testing System	Manual Test Switch
Construction	Polycarbonate Body and Diffuser
Classification	C0 D100 C90 D63
Standards	AS/NZ 2293 AS/NZS 60598.1 EMC

BATTERY AND LEDS

Battery	High-Temp LiFePO4 Lithium Battery
Power Consumption	40W on 240V
Charging Method	3 Stage Intelligence
Charging Time	16 Hours
Lumens Output	4000lm
LED quantity	240 pcs
Lens	LED Lamp Rated 50,000 Hours
Colour Temperature	4000k

REPLACEMENT PART

PART NUMBER	DESCRIPTION
BBATTEN24WPL	LiFePO4 Lithium Battery, 6.4V 3000mAh

SPACING TABLE AND MOUNTING HEIGHT

CLASSIFICATION	2.1m	2.4m	2.7m	3m	3.3m	3.6m	4m	4.5m	5m	6m	7m	8m	9m	10m	15m
D63	11.5	13.2	14.8	16.5	18.1	19.8	22.0	24.5	25.2	26.4	27.3	28.0	28.5	28.8	27.9
D100	11.5	13.2	14.8	16.5	18.1	19.8	22.0	24.7	27.5	31.3	32.6	33.7	34.5	35.2	36.5

NOTE: Care should be taken when spacing luminaires at the distances indicated by the shaded regions to ensure that conformance to Clause 4.3 of AS/NZS 2293.1 is maintained (e.g. maximum 500 m2 per emergency luminaire).

