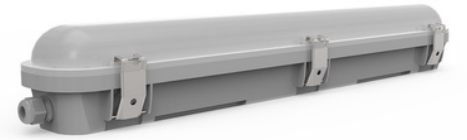


SBATTEN22WP / SBATTEN24WP / SBATTEN25WP NON EMERGENCY WEATHERPROOF BATTEN

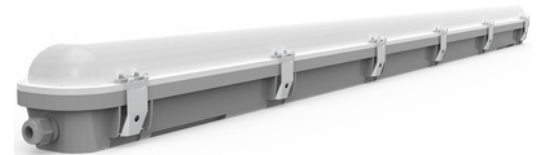
PRODUCT RANGE

CODE	DESCRIPTION
SBATTEN22WP	20W 600mm Non Emergency Weatherproof Batten
SBATTEN24WP	40W 1200mm Non Emergency Weatherproof Batten
SBATTEN25WP	60W 1500mm Non Emergency Weatherproof Batten

WITH MICROWAVE SENSOR:
SBATTEN22WPS / SBATTEN24WPS / SBATTEN25WPS



20W 600mm



40W 1200mm

ORDERING INFORMATION

Carton Qty	6 pieces each product code	
PRODUCT	WEIGHT	DIMENSION (L X W X H)
20W 600mm	1.1kg (unit) - 6.6kg (box)	670mm x 85mm x 95mm
40W 1200mm	1.8kg (unit) - 10.8kg (box)	1270mm x 85mm x 95mm
60W 1500mm	2.4kg (unit) - 14.4kg (box)	1570mm x 85mm x 95mm

OPERATIONAL INFORMATION

TECHNICAL SPECIFICATIONS

Voltage (V); Frequency (Hz)	220-260V; 50Hz
Operating Temperature	-25° - 45° C
IP Rating	IP65
iK Rating	IK10
Wiring	Large Terminal Block
Mounting Type	Wall or Ceiling Surface Mounted
Construction	Polycarbonate Body and Diffuser
Standards	AS/NZS 60598.1 EMC

BATTERY

Power Consumption	600mm: 20W on 240V; 1200mm: 40W on 240V; 1500mm: 60W on 240V
Power Factor	>0.95

LEDs

PRODUCT	LUMENS OUTPUT	LED QTY
600mm	2440lm	120 pcs
1200mm	4600lm	240 pcs
1500mm	7450lm	360 pcs
Lens	LED Lamp Rated 50,000 Hours	
Colour Temperature	4000K	
Dimmable	No	
Beam Angle	110 Degrees	

