

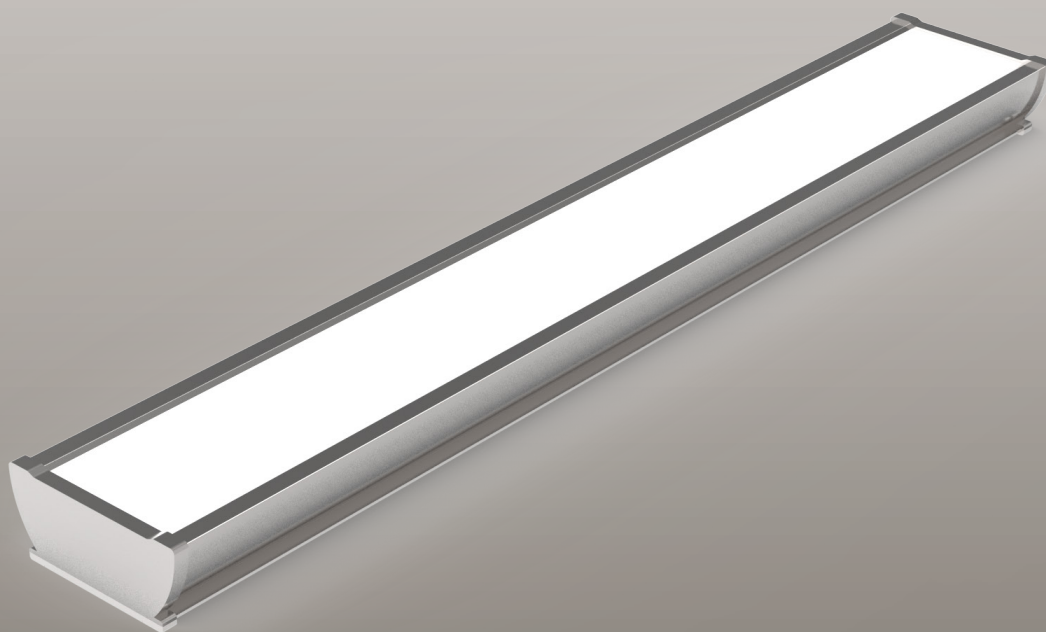


E&E LIGHTING  
AUSTRALIA

# EMSBATTEN24WP

40W 1500mm Emergency Weatherproof Batten

PRODUCT CODE: EMSBATTEN24WP



## FEATURES

- Easy to install wiring
- Optional built-in microwave sensor
- Replacement for fluorescent batten without compromising performance
- High temperature NiMh batteries



Slimline Emergency Batten suitable for all applications



Fully compliant with AS/NZ 2293



Flex and Plug Optional



High Light Output with Low-Glare Distribution.



0487 248 481

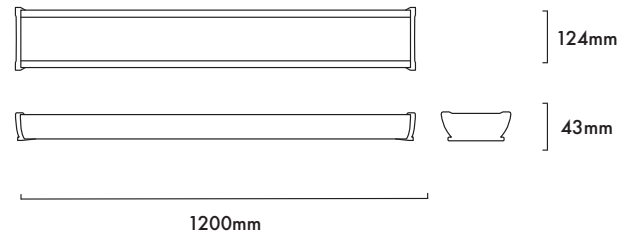
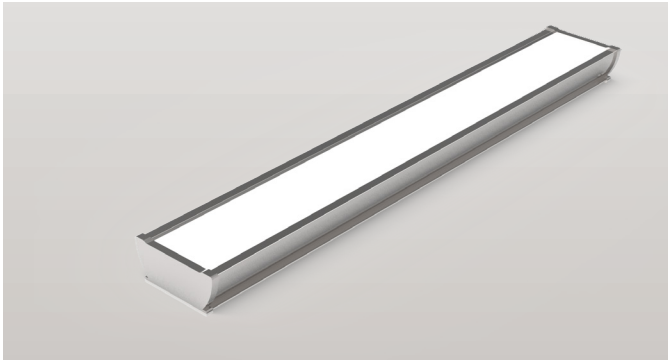


sales@eelightning.com.au



eelightning.com.au

40W 1500MM LED EMERGENCY WEATHERPROOF BATTEN  
CODE: EMSBATTEN24WP



TECHNICAL SPECIFICATIONS

<b>Product Code</b>	EMSBATTEN24WP
<b>Description</b>	40W LED Emergency Slimline Weatherproof Batten
<b>Mounting</b>	Wall or Ceiling Surface Mounted. (Suspension Kit Optional)
<b>Dimension L x W x H</b>	1200mm x 124mm x 43mm
<b>Operating Mode</b>	Switch Maintained
<b>Testing System</b>	Manual Test Switch
<b>Charging Time</b>	16 Hours
<b>Operating Voltage</b>	85 - 265VAc; 50Hz
<b>Power Factor</b>	>0.90
<b>Power Consumption</b>	40W on 240V
<b>IP Rating</b>	IP 65
<b>Operating Temperature</b>	0° - 45° C
<b>Classification</b>	C0=D125 C90=D50
<b>Lumens Output</b>	3960lm
<b>LED Quantity</b>	240pc
<b>PC Cover</b>	Milky
<b>Colour Temperature</b>	4000K

REPLACEMENT PARTS

PART NUMBER	DESCRIPTION
<b>BSBATTEN24WP</b>	Battery, NiMh 9.6V 1200Mah
<b>SKSBATTEN</b>	Suspension Kit to Suit Slimline Batten

SPACING TABLE AND MOUNTING HEIGHT

CLASSIFICATION	2.1m	2.4m	2.7m	3m	3.3m	3.6m	4m	5m
<b>C0 D125</b>	24.5	25.6	27.5	28.3	29.1	30.1	31.2	34.0
<b>C90 D50</b>	18	18.7	19.4	20.1	20.7	21.2	21.8	23.2