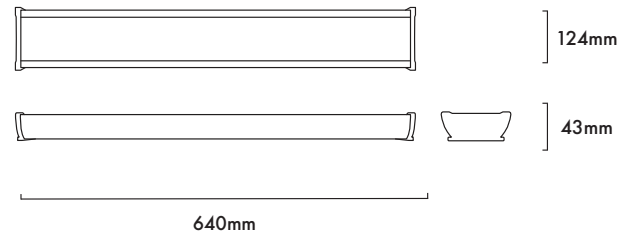
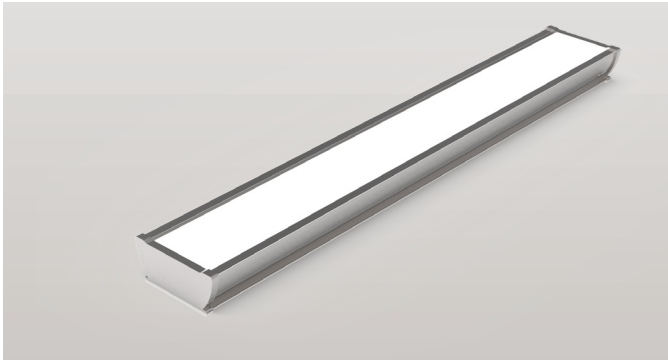


20W LED EMERGENCY SLIMLINE WEATHERPROOF BATTEN CODE: EMSBATTEN22WP



TECHNICAL SPECIFICATIONS

Product Code	EMSBATTEN22WP
Description	20W LED Emergency Slimline Weatherproof Batten
Mounting	Wall or Ceiling Surface Mounted. (Suspension Kit Optional)
Dimension L x W x H	640mm x 124mm x 43mm
Operating Mode	Switch Maintained
Testing System	Manual Test Switch
Charging Time	16 Hours
Operating Voltage	85 - 265VAc; 50Hz
Power Factor	>0.90
Power Consumption	20W on 240V
IP Rating	IP 65
Operating Temperature	0° - 45° C
Classification	C0=D100 C90=D32
Lumens Output	1960lm
LED Quantity	120pc
PC Cover	Milky
Colour Temperature	4000K

REPLACEMENT PARTS

PART NUMBER	DESCRIPTION
BSBATTEN22WP	Battery, NiMh 9.6V 1200Mah
SKSBATTEN	Suspension Kit to Suit Slimline Batten

SPACING TABLE AND MOUNTING HEIGHT

CLASSIFICATION	2.1m	2.4m	2.7m	3m	3.3m	3.6m	4m	5m
C0 D100	22.7	23.7	24.6	25.5	26.3	27.0	27.9	29.8
C90 D32	15.4	16.1	16.7	17.2	17.6	18.0	18.5	19.5