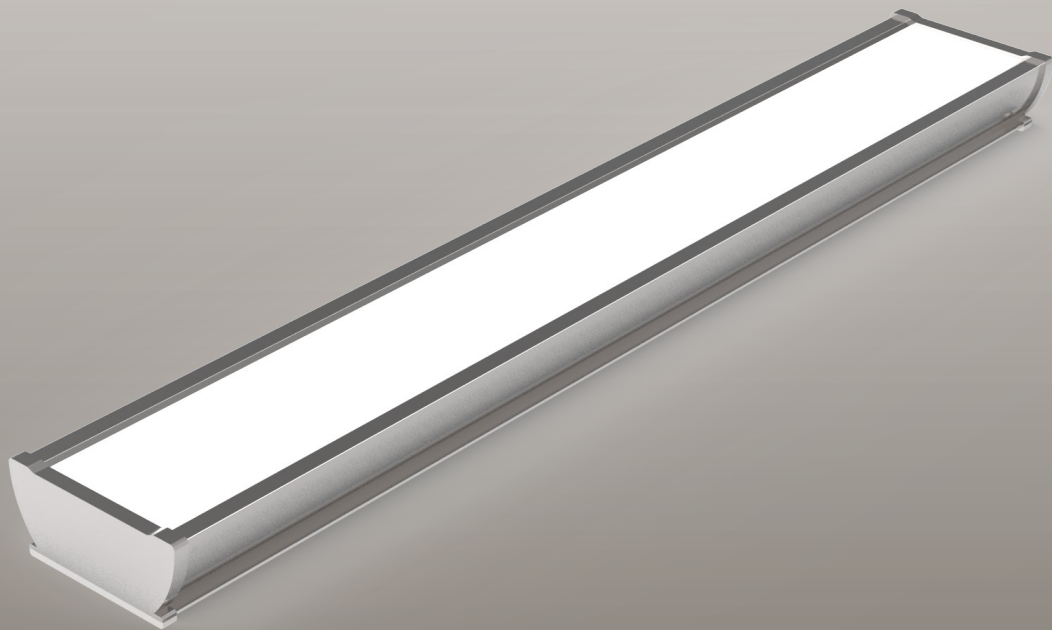




# EMSBATTEN22WP

20W 600mm Emergency Weatherproof Batten  
PRODUCT CODE: EMSBATTEN22WP



## FEATURES

- Easy to install wiring
- Optional built-in microwave sensor
- Replacement for fluorescent Batten without compromising performance
- High temperature NiMh Batteries



Slimline Emergency Batten suitable for all applications



Fully compliant with AS/NZ 2293

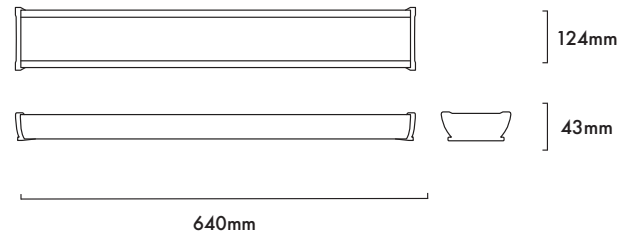
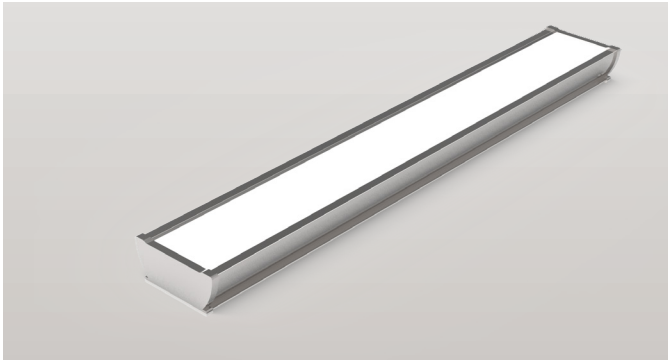


Flex and Plug Optional



High Light Output with Low-Glare Distribution.

## 20W LED EMERGENCY SLIMLINE WEATHERPROOF BATTEN CODE: EMSBATTEN22WP



### TECHNICAL SPECIFICATIONS

<b>Product Code</b>	EMSBATTEN22WP
<b>Description</b>	20W LED Emergency Slimline Weatherproof Batten
<b>Mounting</b>	Wall or Ceiling Surface Mounted. (Suspension Kit Optional)
<b>Dimension L x W x H</b>	640mm x 124mm x 43mm
<b>Operating Mode</b>	Switch Maintained
<b>Testing System</b>	Manual Test Switch
<b>Charging Time</b>	16 Hours
<b>Operating Voltage</b>	85 - 265VAc; 50Hz
<b>Power Factor</b>	>0.90
<b>Power Consumption</b>	20W on 240V
<b>IP Rating</b>	IP 65
<b>Operating Temperature</b>	0° - 45° C
<b>Classification</b>	C0=D100 C90=D32
<b>Lumens Output</b>	1960lm
<b>LED Quantity</b>	120pc
<b>PC Cover</b>	Milky
<b>Colour Temperature</b>	4000K

### REPLACEMENT PARTS

PART NUMBER	DESCRIPTION
<b>BSBATTEN22WP</b>	Battery, NiMh 9.6V 1200Mah
<b>SKSBATTEN</b>	Suspension Kit to Suit Slimline Batten

### SPACING TABLE AND MOUNTING HEIGHT

CLASSIFICATION	2.1m	2.4m	2.7m	3m	3.3m	3.6m	4m	5m
<b>C0 D100</b>	22.7	23.7	24.6	25.5	26.3	27.0	27.9	29.8
<b>C90 D32</b>	15.4	16.1	16.7	17.2	17.6	18.0	18.5	19.5