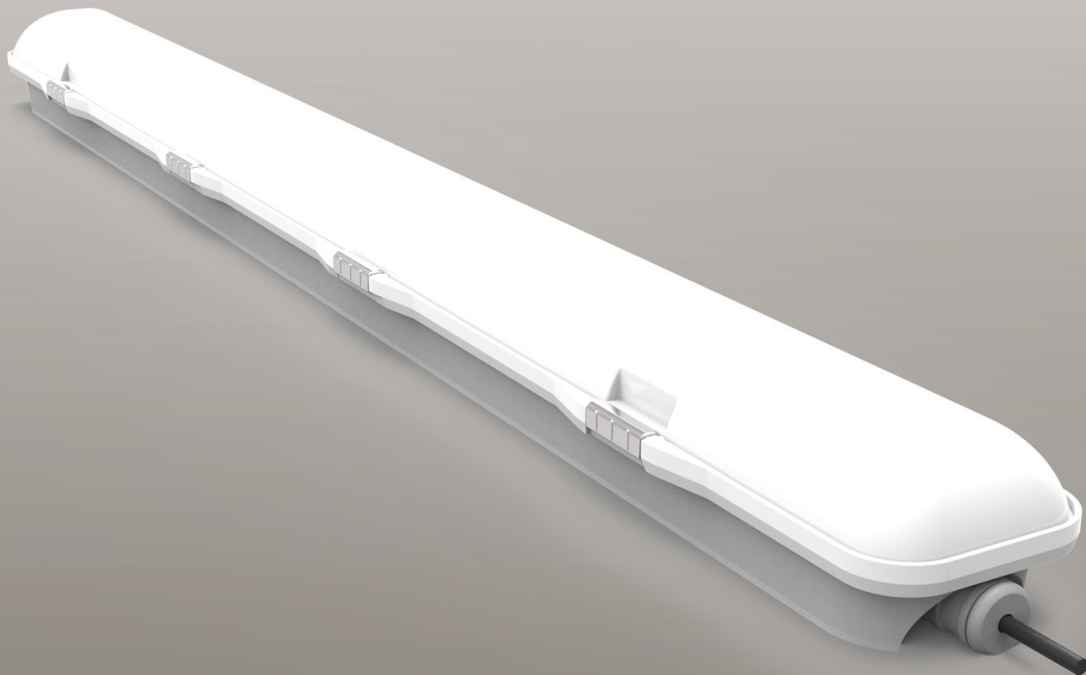




EMBATTEN25WPL

60w 1500mm Emergency Weatherproof Batten

PRODUCT CODE: EMBATTEN25WPL



FEATURES

- Elegant PC housing with solid stainless steel clip
- Optional built-in microwave sensor
- Replacement for fluorescent batten without compromising performance
- High temperature LiFePO4 batteries
- Easy to install wiring, with flex and plug optional



High light output
with low-glare
distribution

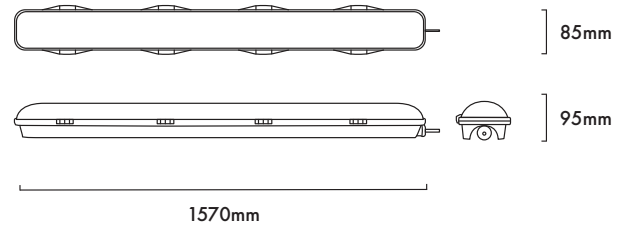
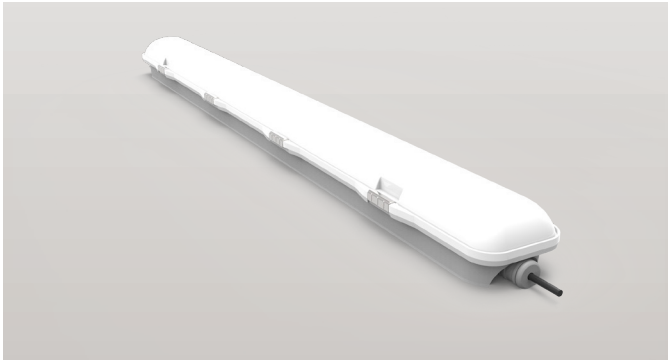


Fully compliant
with AS/NZ 2293



Slim body design
to suit most
applications

60W 1500MM LED EMERGENCY WEATHERPROOF BATTEN
CODE: EMBATTEN25WPL



TECHNICAL SPECIFICATIONS

Product Code	EMBATTEN25WPL
Description	60W 1500mm LED Emergency Weatherproof Batten
Mounting	Wall or Ceiling Surface Mounted
Dimension L x W x H	1570mm x 85mm x 95mm
Operating Mode	Switch Maintained
Testing System	Manual Test Switch
Charging Time	16 Hours
Operating Voltage	220-240Vac; 50Hz
Power Factor	>0.95
Power Consumption	60W on 240V
IP Rating	IP65
IK Rating	IK10
Operating Temperature	1° - 45° C
Classification	C0=D80 C90=D40
Lumens Output	6550lm
LED Quantity	364 pcs

REPLACEMENT PARTS

PART NUMBER	DESCRIPTION
BBATTEN25WPL	Battery, LiFEPO4 7.2V 2600mAh

SPACING TABLE AND MOUNTING HEIGHT

CLASSIFICATION	2.1m	2.4m	2.7m	3m	3.3m	3.6m	4m	5m
C0 D80	21.1	22.0	22.8	23.6	24.3	25.0	25.8	27.5
C90 D40	16.7	17.4	18.0	18.6	19.1	19.6	20.1	21.3