

EMBATTEN22WPL / EMBATTEN24WPL/ EMBATTEN25WPL LED EMERGENCY WEATHERPROOF BATTEN

PRODUCT RANGE

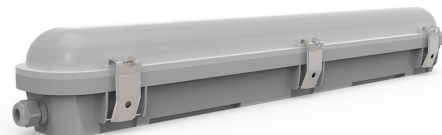
CODE	DESCRIPTION
EMBATTEN22WPL	20W 600mm LED Emergency Weatherproof Batten
EMBATTEN24WPL	40W 1200mm LED Emergency Weatherproof Batten
EMBATTEN25WPL	60W 1500mm LED Emergency Weatherproof Batten

WITH MICROWAVE SENSOR:

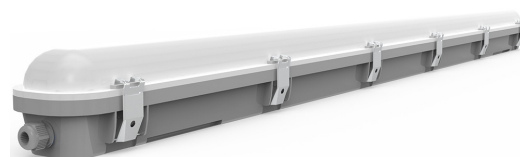
EMBATTEN22WPLS / EMBATTEN24WPLS / EMBATTEN25WPLS

ORDERING INFORMATION

Carton Qty	6 pieces	
PRODUCT	WEIGHT	DIMENSION (L X W X H)
20W 600mm	1.5kg (unit) - 6.0kg (box)	670mm x 95mm x 85mm
40W 1200mm	2.2kg (unit) - 13.2kg (box)	1270mm x 95mm x 85mm
60W 1500mm	2.8kg (unit) - 16.8kg (box)	1570mm x 95mm x 85mm



20W 600mm



40W 1200mm

OPERATIONAL INFORMATION

TECHNICAL SPECIFICATIONS

Operating Mode	Switch Maintained
Voltage (V); Frequency (Hz)	220-260V; 50Hz
Operating Temperature	1° - 45° C
IP Rating	IP65
Wiring	Large Terminal Block
Mounting Type	Wall or Ceiling Surface Mounted
Testing System	Manual Test Switch
Construction	Polycarbonate Body and Diffuser
Standards	AS/NZ 2293 AS/NZS 60598.1 EMC

BATTERY

Battery	High-Temp LiFePO4 Lithium Battery
Power Consumption	600mm: 20W on 240V; 1200mm: 40W on 240V; 1500mm: 60W on 240V
Power Factor	>0.95
Charging Method	3 Stage Intelligence
Charging Time	16 Hours

LEDs

PRODUCT	LUMENS OUTPUT	LED QTY
600mm	2090lm	120 pcs
1200mm	4600lm	240 pcs
1500mm	7450lm	360 pcs

CLASSIFICATION

PRODUCT CODE	DESCRIPTION
EMBATTEN22WPL	C0 D50 C90 D25
EMBATTEN24WPL	C0 D63 C90 D32
EMBATTEN25WPL	C0 D80 C90 D40

REPLACEMENT PART

PART NUMBER	DESCRIPTION
BBATTEN22WPL	LiFePO4 Lithium Battery, 6.4V; 3000mAh
BBATTEN24WPL	LiFePO4 Lithium Battery, 6.4V; 3000mAh
BBATTEN25WPL	LiFePO4 Lithium Battery, 6.4V; 3000mAh

SPACING TABLE AND MOUNTING HEIGHT

CLASSIFICATION	2.1m	2.4m	2.7m	3m	3.3m	3.6m	4m	4.5m	5m	6m	7m	8m	9m	10m	15m
D25	11.5	13.2	14.8	15.7	16.1	16.4	16.8	17.3	17.6	18.1	18.3	18.2	17.8	17.2	0.0 ⁴
D32	11.5	13.2	14.8	16.5	17.6	18.0	18.5	19.0	19.5	20.1	20.5	20.7	20.6	20.3	0.0 ⁴
D40	11.5	13.2	14.8	16.5	18.1	19.5	20.1	20.7	21.2	22.1	22.6	23.0	23.1	23.0	0.0 ⁴
D50	11.5	13.2	14.8	16.5	18.1	19.8	21.8	22.5	23.1	24.1	24.9	25.4	25.7	25.8	23.6
D63	11.5	13.2	14.8	16.5	18.1	19.8	22.0	24.5	25.2	26.4	27.3	28.0	28.5	28.8	27.9
D80	11.5	13.2	14.8	16.5	18.1	19.8	22.0	24.7	27.5	28.9	30.0	30.9	31.5	32.1	32.3

NOTE: Care should be taken when spacing luminaires at the distances indicated by the shaded regions to ensure that conformance to Clause 4.3 of AS/NZS 2293.1 is maintained (e.g. maximum 500 m² per emergency luminaire).

