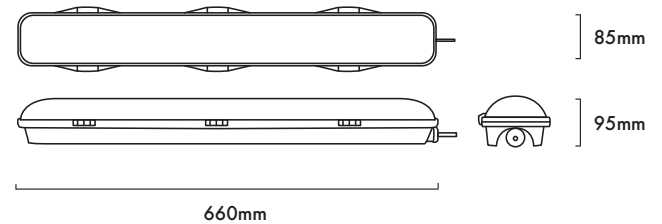
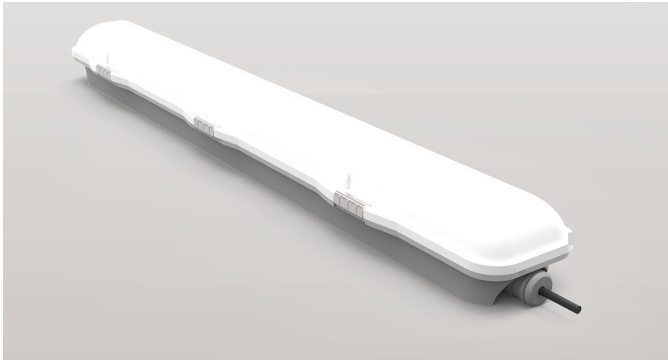


20W 600MM LED EMERGENCY WEATHERPROOF BATTEN  
CODE: EMBATTEN22WPL



TECHNICAL SPECIFICATIONS

<b>Product Code</b>	EMBATTEN22WPL
<b>Description</b>	20W 600mm LED Emergency Weatherproof Batten
<b>Mounting</b>	Wall or Ceiling Surface Mounted
<b>Dimension L x W x H</b>	660mm x 85mm x 95mm
<b>Operating Mode</b>	Switch Maintained
<b>Testing System</b>	Manual Test Switch
<b>IK Rating</b>	IK10
<b>Charging Time</b>	16 Hours
<b>Operating Voltage</b>	220-260Vac; 50Hz
<b>Power Factor</b>	>0.95
<b>Power Consumption</b>	20W on 240V
<b>IP Rating</b>	IP 65
<b>Operating Temperature</b>	1° - 45° C
<b>Classification</b>	C0=50 C90=D25
<b>Lumens Output</b>	2090lm
<b>LED Quantity</b>	120pc
<b>PC Cover</b>	Milky
<b>Colour Temperature</b>	4000K

REPLACEMENT PARTS

PART NUMBER	DESCRIPTION
<b>BBATTEN22WPL</b>	Battery, LiFePO4 7.2V 2600mAh

SPACING TABLE AND MOUNTING HEIGHT

CLASSIFICATION	2.1m	2.4m	2.7m	3m	3.3m	3.6m	4m	5m
<b>C0 D50</b>	18.0	18.7	19.4	20.1	20.7	21.2	21.8	23.2
<b>C90 D25</b>	14.2	14.7	15.3	15.7	16.1	16.5	16.9	17.7