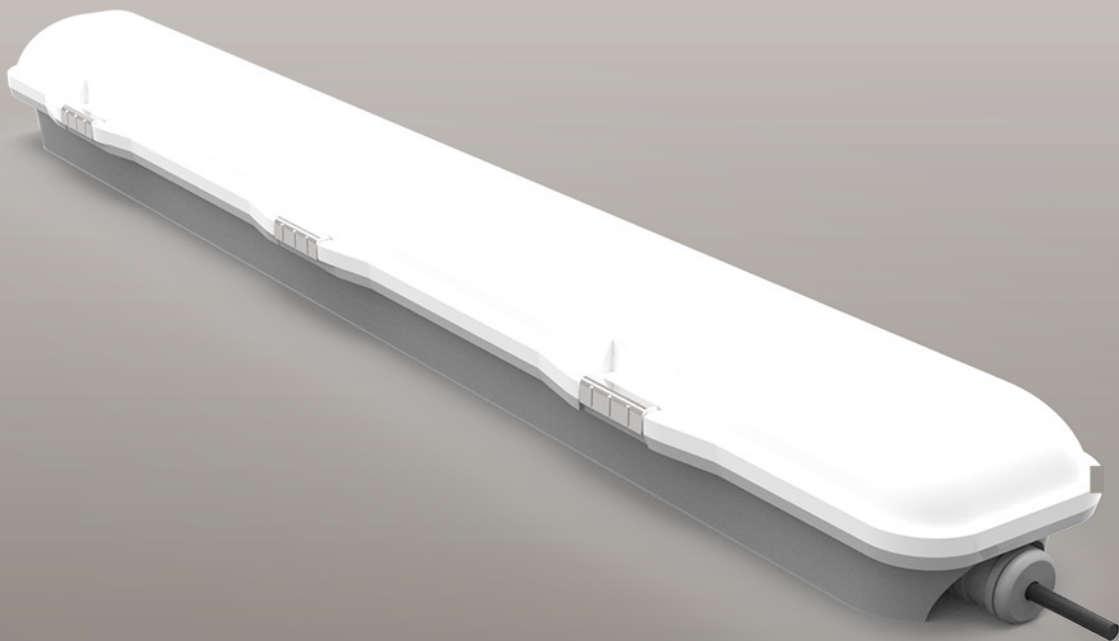




EMBATTEN22WPL

20w 600mm Emergency Weatherproof Batten

PRODUCT CODE: EMBATTEN22WPL



FEATURES

- Elegant PC housing with solid stainless steel clip
- Optional built-in microwave sensor
- Replacement for fluorescent batten without compromising performance.
- High temperature LiFEPO4 batteries



High light output with low-glare distribution



Fully compliant with AS/NZ 2293

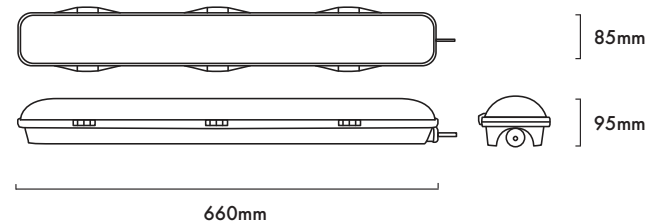
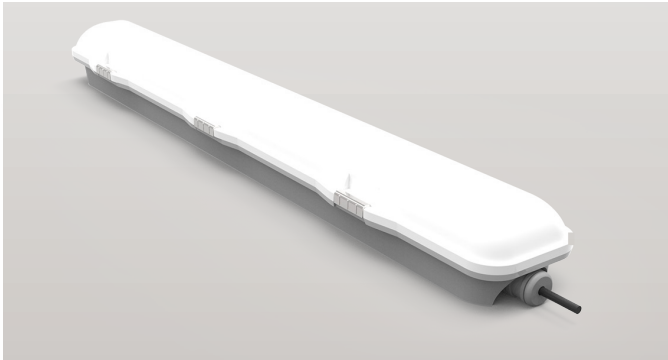


Easy to install wiring, Flex and Plug optional



Slim body design to suit most applications

20W 600MM LED EMERGENCY WEATHERPROOF BATTEN
CODE: EMBATTEN22WPL



TECHNICAL SPECIFICATIONS

Product Code	EMBATTEN22WPL
Description	20W 600mm LED Emergency Weatherproof Batten
Mounting	Wall or Ceiling Surface Mounted
Dimension L x W x H	660mm x 85mm x 95mm
Operating Mode	Switch Maintained
Testing System	Manual Test Switch
IK Rating	IK10
Charging Time	16 Hours
Operating Voltage	220-260Vac; 50Hz
Power Factor	>0.95
Power Consumption	20W on 240V
IP Rating	IP 65
Operating Temperature	1° - 45° C
Classification	C0=50 C90=D25
Lumens Output	2090lm
LED Quantity	120pc
PC Cover	Milky
Colour Temperature	4000K

REPLACEMENT PARTS

PART NUMBER	DESCRIPTION
BBATTEN22WPL	Battery, LiFePO4 7.2V 2600mAh

SPACING TABLE AND MOUNTING HEIGHT

CLASSIFICATION	2.1m	2.4m	2.7m	3m	3.3m	3.6m	4m	5m
C0 D50	18.0	18.7	19.4	20.1	20.7	21.2	21.8	23.2
C90 D25	14.2	14.7	15.3	15.7	16.1	16.5	16.9	17.7