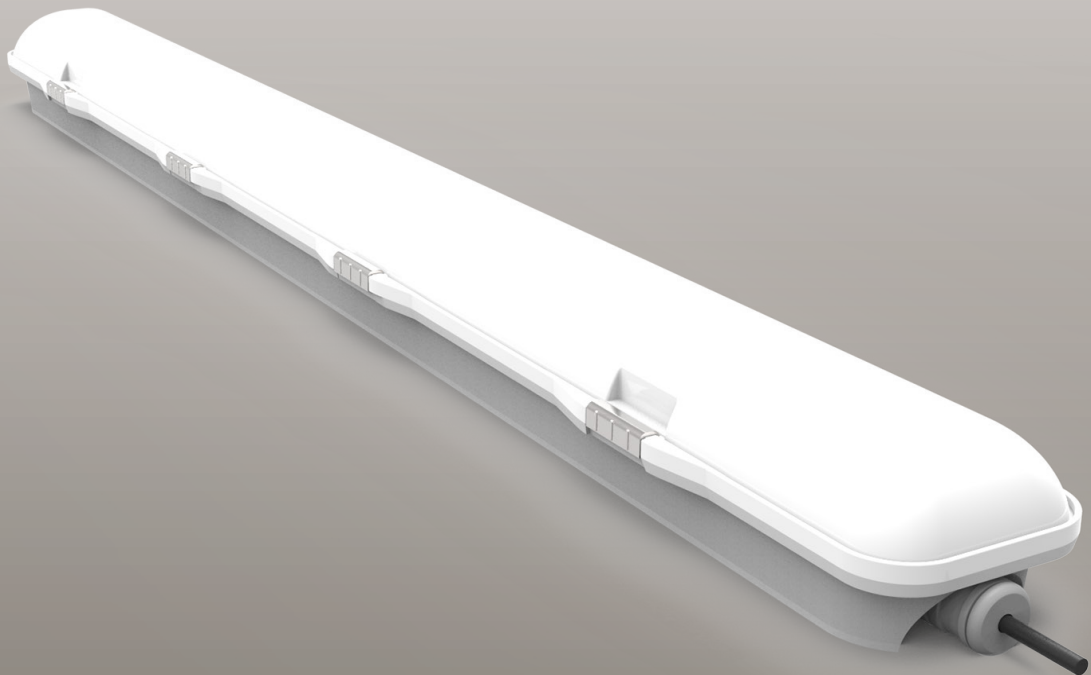




EMBATTEN24WPL

40w 1200mm Emergency Weatherproof Batten
PRODUCT CODE: EMBATTEN24WPL



FEATURES

- Elegant PC housing with solid stainless steel clip
- Optional built-in microwave sensor
- Replacement for fluorescent batten without compromising performance
- High temperature LiFEPO4 batteries
- Easy to install wiring, with flex and plug optional



High light output
with low-glare
distribution

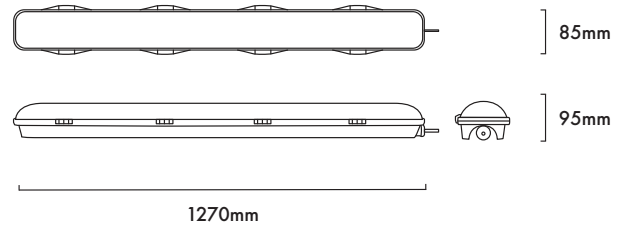
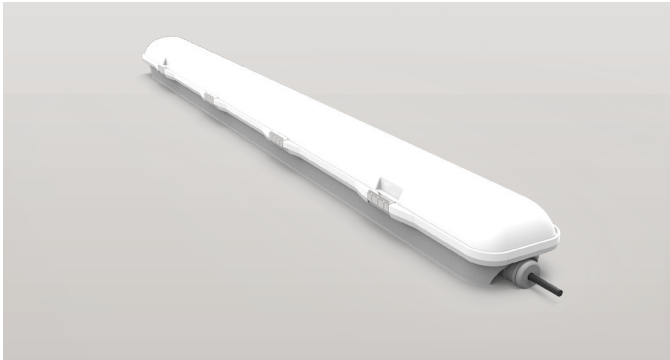


Fully compliant
with AS/NZ 2293



Slim body design
to suit most
applications

40W 1200MM LED EMERGENCY WEATHERPROOF BATTEN
CODE: EMBATTEN24WPL



TECHNICAL SPECIFICATIONS

Product Code	EMBATTEN24WPL
Description	40W 1200mm LED Emergency Weatherproof Batten
Mounting	Wall or Ceiling Surface Mounted
Dimension L x W x H	1270mm x 85mm x 95mm
Operating Mode	Switch Maintained
Testing System	Manual Test Switch
Charging Time	16 Hours
Operating Voltage	220-260Vac; 50Hz
Power Factor	>0.95
Power Consumption	40W on 240V
IP Rating	IP65
IK Rating	IK10
Operating Temperature	1° - 45° C
Classification	C0=D63 C90=D32
Lumens Output	4600lm
LED Quantity	240 pcs

REPLACEMENT PARTS

PART NUMBER	DESCRIPTION
BBATTEN24WPL	Battery, LiFEPO4 7.2V 2600mAh

SPACING TABLE AND MOUNTING HEIGHT

CLASSIFICATION	2.1m	2.4m	2.7m	3m	3.3m	3.6m	4m	5m
C0 D63	19.4	20.3	21.1	21.8	22.4	23.0	23.7	25.2
C90 D32	15.4	16.1	16.7	17.2	17.6	18.0	18.5	19.5